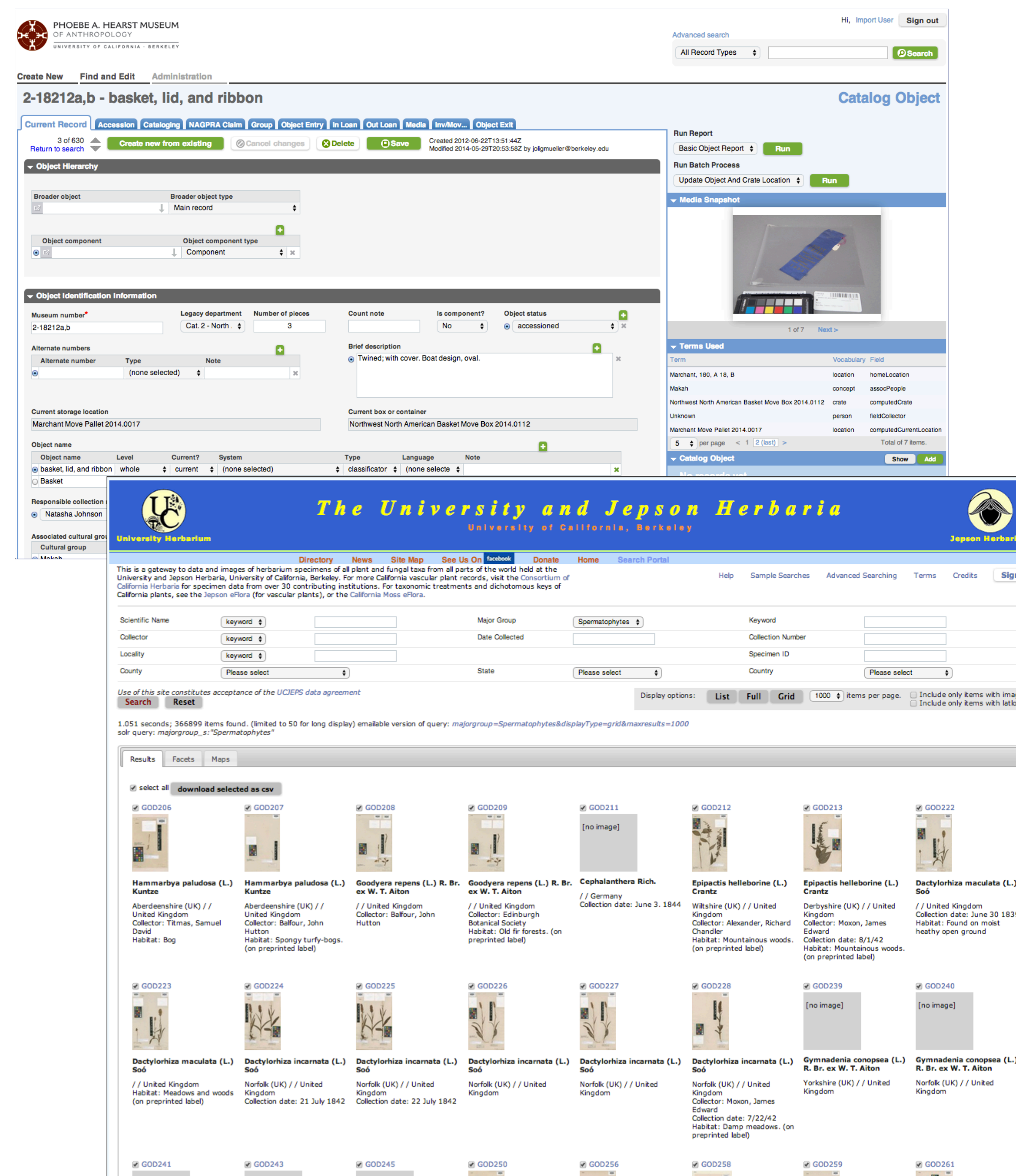


CollectionSpace: Supporting UC Berkeley museums

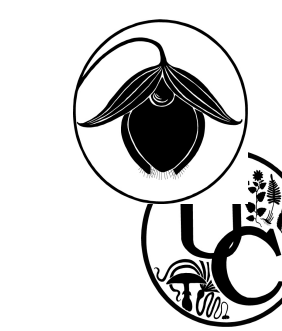
How would *you* care for 3.5 million cultural objects, plants and works of art?

CollectionSpace brings excellence in stewardship and sharing to campus museums and collections

- Online access by visitors and researchers worldwide
- Barcoded location tracking across exhibit, storage, conservation and research facilities
- Local expertise in data migration, deployment and service hosting
- Reduced software redundancy and risk



Customizable—provides the flexibility needed to fit the diverse expertise of our campus partners:



The University and Jepson Herbaria
University of California, Berkeley



PHOEBE A. HEARST MUSEUM
OF ANTHROPOLOGY
UNIVERSITY OF CALIFORNIA - BERKELEY



UNIVERSITY OF CALIFORNIA
BOTANICAL GARDEN

CineFiles

University of California
Berkeley Art Museum & Pacific Film Archive

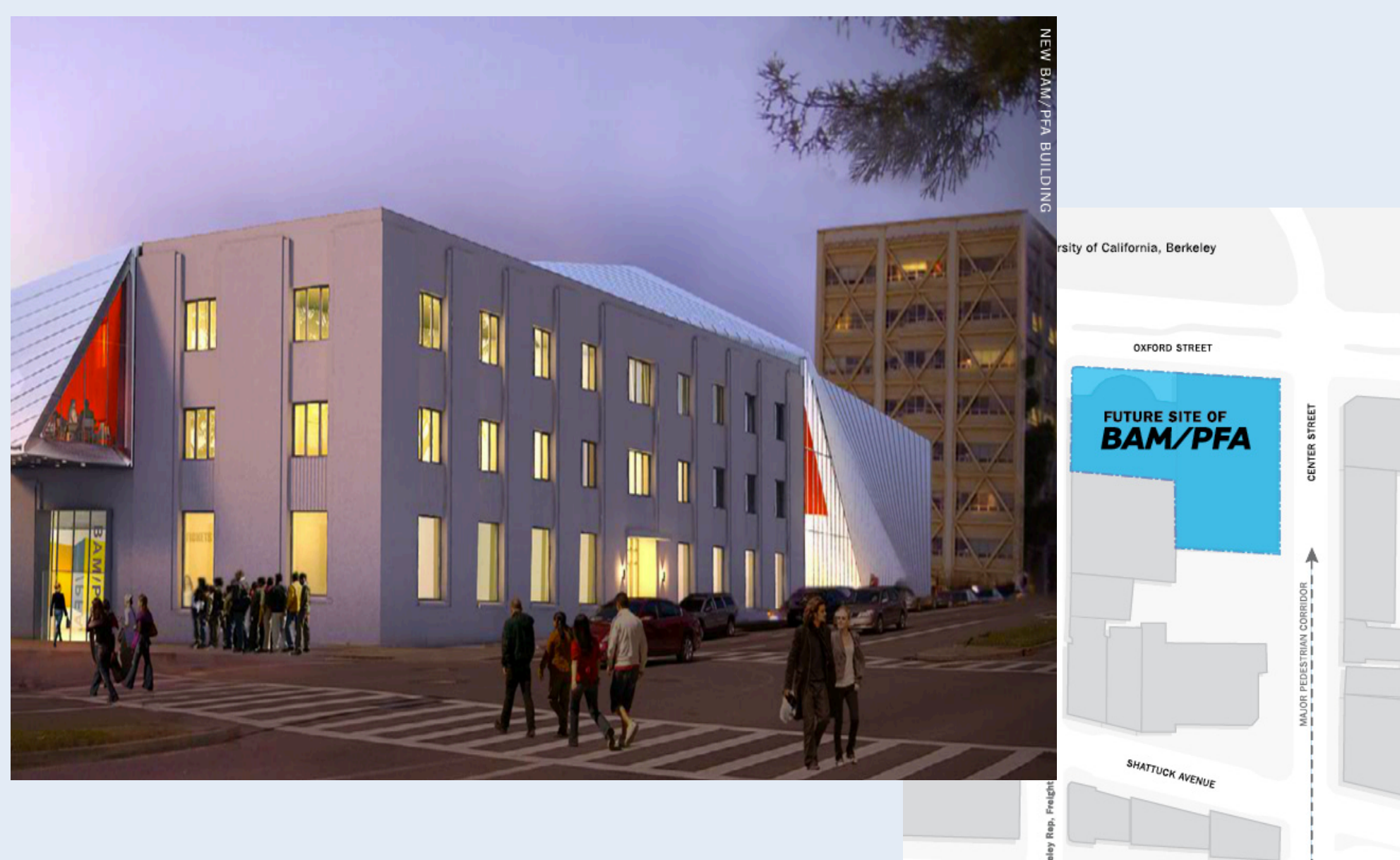
BAM/PFA
UNIVERSITY OF CALIFORNIA, BERKELEY ART MUSEUM & PACIFIC FILM ARCHIVE

Lyrasis: a home for the software, a base for the broader community of institutions and developers

- Hosted software-as-a-service
- Sustainable business model
- Non-profit foundation
- Domain-based communities of practice
- Partnering with vendors and service providers
- Exploring boundaries (libraries, archives, museums, beyond higher education)

LYRISIS
Advancing Knowledge

The Berkeley Art Museum/Pacific Film Archive is preparing to move 30,000 works of art, film, video, clippings and ephemera to its future home on Oxford Street—powered by CollectionSpace



collectionspace

Designed for sustainability
Community-built
Open source



MUSEUM
OF THE
MOVING
IMAGE

CollectionSpace is funded by grants from the Andrew W. Mellon Foundation, the Institute of Museum and Library Services and the UC Berkeley Office of the CIO

research-it.berkeley.edu

research-it@berkeley.edu

collectionspace.org